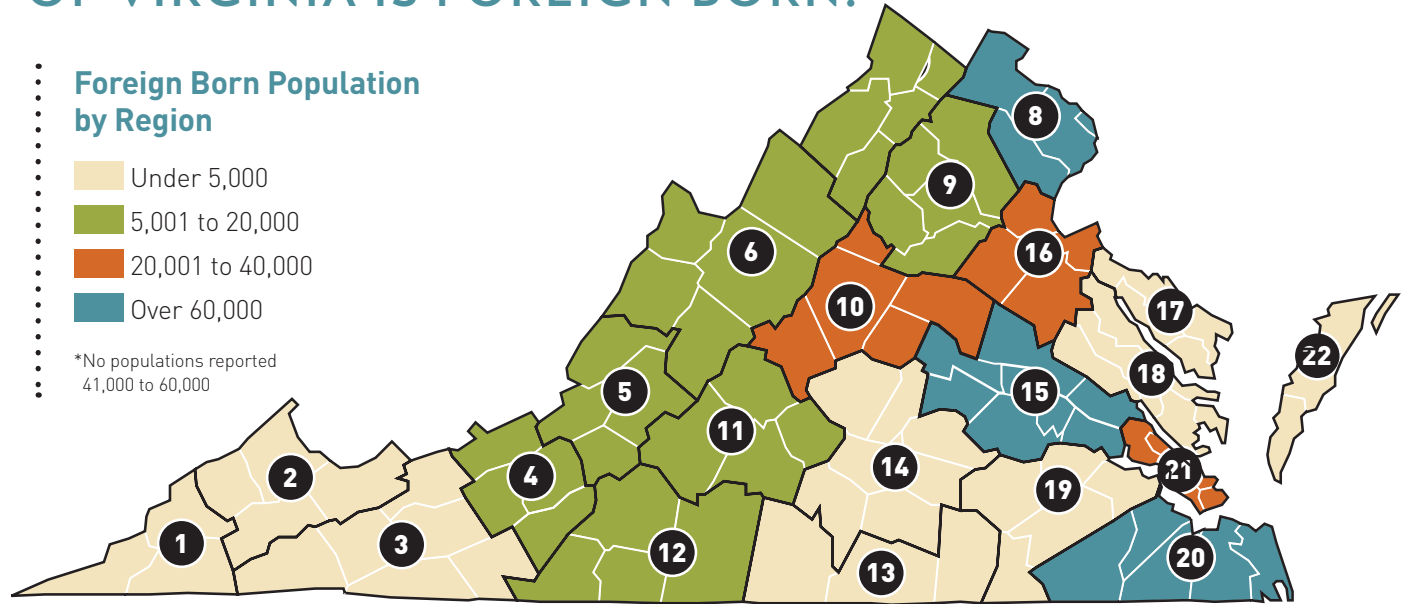


VIRGINIA

AN ESTIMATED 11% OF THE POPULATION OF VIRGINIA IS FOREIGN BORN.



Foreign Born Population by Region

1 = 1,248	12 = 6,608
2 = 1,264	13 = 1,602
3 = 2,583	14 = 2,172
4 = 9,676	15 = 77,951
5 = 13,475	16 = 20,812
6 = 13,901	17 = 1,659
7 = 10,892	18 = 1,689
8 = 561,718	19 = 4,622
9 = 9,586	20 = 71,130
10 = 16,715	21 = 31,302
11 = 6,512	22 = 2,967

According to the Migration Policy Institute, the foreign born population in Virginia increased 58% from 2000 to 2011, which is higher than the growth seen on the national level (30%)

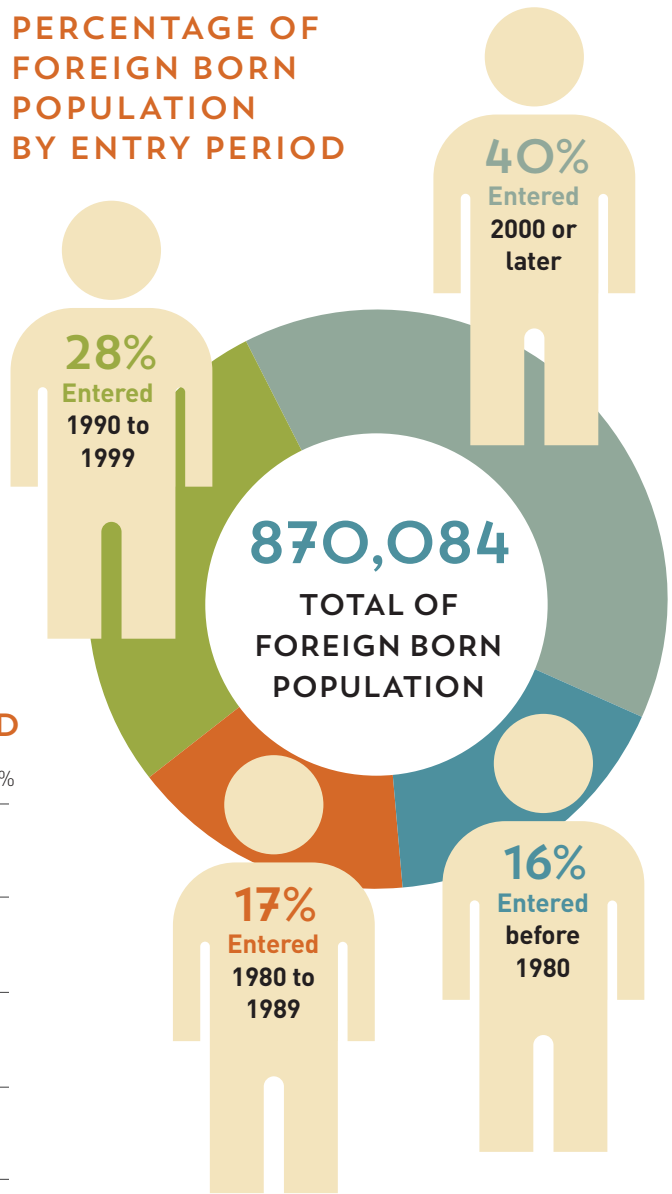
Virginia has actually seen a decrease in recent years in the growth rate of foreign born. Of the current foreign born population, 39% (37,830) entered since the year 2000. While this seems to be a large percentage, the rate of growth of the foreign born population as shown in the table below is less than reported in the 2000 census data, although it remains higher than the national average.

PERCENT INCREASE IN FOREIGN BORN IN VIRGINIA

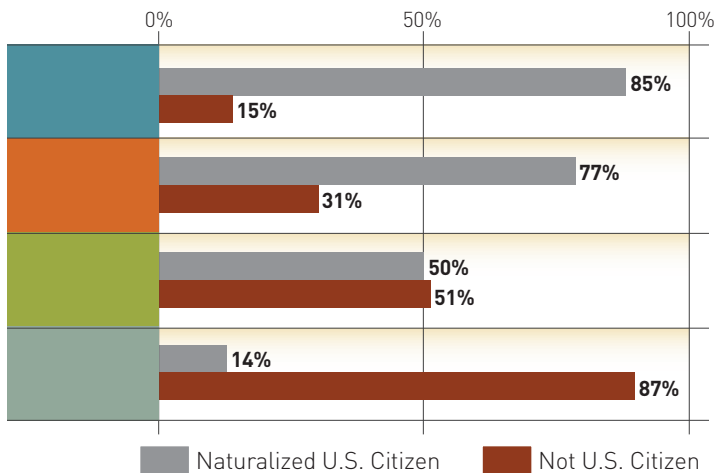
	% Increase	Number
Cumulative (2011 estimate)	64.8%	870,084
Cumulative (2000)	86.8%	527,907
Cumulative (1990)	—	282,529

Approximately 45% of the foreign born population in Virginia are naturalized U.S. citizens. The percentage of foreign born individuals who are naturalized appears to be decreasing when comparing the 1980s (77% of foreign born who entered became naturalized during this period) to the 2000s (14% of foreign born who entered became naturalized during this period). Thus, the percentage of residents who are not U.S. citizens has increased. It is beyond the scope of this report to determine whether naturalization has become more difficult to obtain or whether naturalization is less desirable for foreign born entering Virginia, nor does this report consider whether this trend is specific to Virginia or whether this pattern is replicated in other regions of the United States.

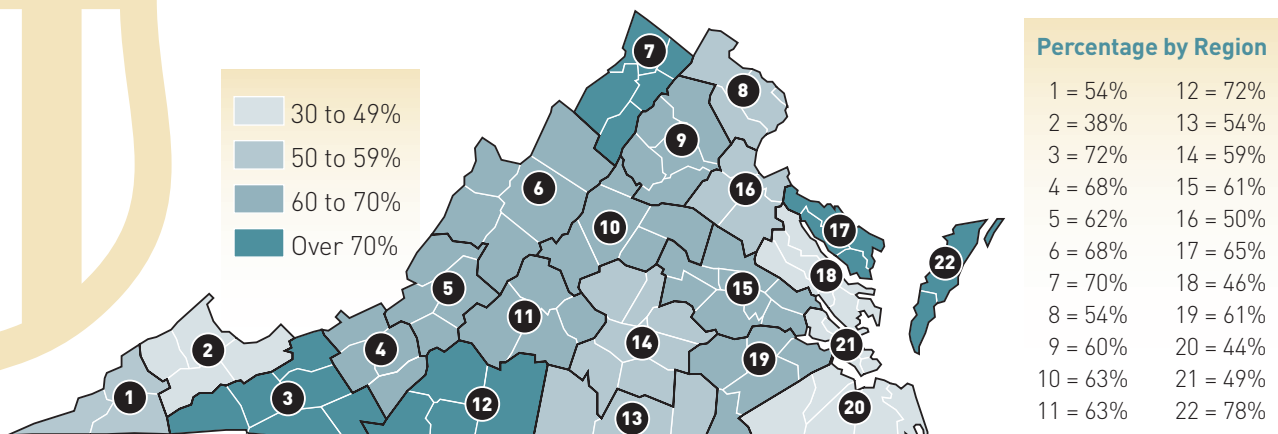
PERCENTAGE OF FOREIGN BORN POPULATION BY ENTRY PERIOD



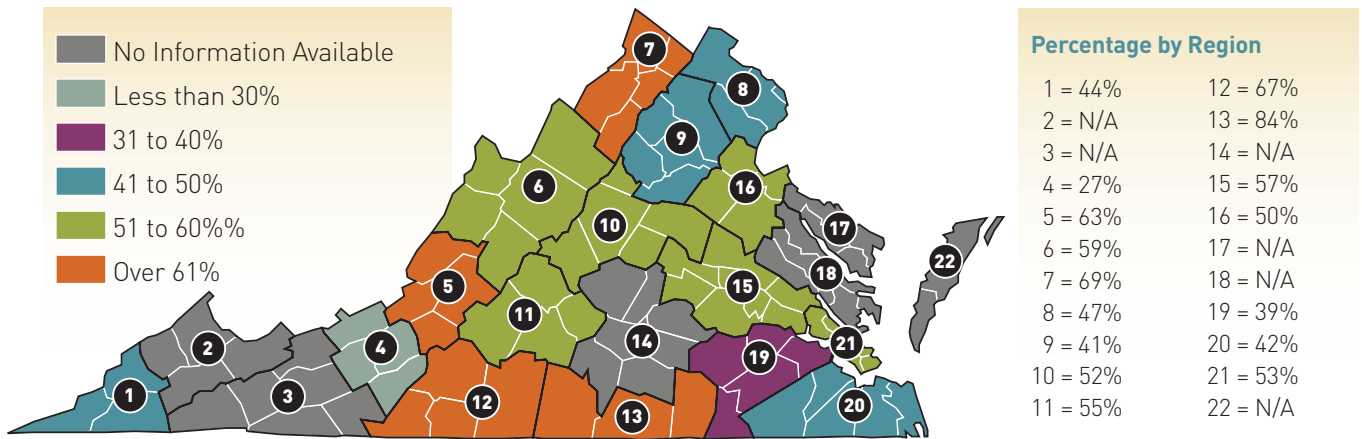
CITIZENSHIP STATUS OF FOREIGN BORN POPULATION BY ENTRY PERIOD



PERCENTAGE OF FOREIGN BORN POPULATION WHO ARE NOT US CITIZENS BY REGION



PERCENTAGE OF FOREIGN BORN POPULATION WHO DO NOT SPEAK ENGLISH AT LEAST VERY WELL



PERCENTAGE OF FOREIGN BORN POPULATION WHO ENTERED THE U.S. AFTER THE YEAR 2000 WHO ARE NOT U.S. CITIZENS

DATE OF ENTRANCE AND NATURALIZATION STATUS FOR FOREIGN BORN

Total Foreign Born Population			870,084
Entered 2000 or later (39% of total foreign born)			337,830
Naturalized U.S. citizens	46,113	14%	
Not U.S. citizens	291,717	87%	
Entered 1990 to 1999 (28% of total foreign born)			245,378
Naturalized U.S. citizens	121,403	50%	
Not U.S. citizens	123,975	51%	
Entered 1980 to 1989 (17% of total foreign born)			147,872
Naturalized U.S. citizens	114,143	77%	
Not U.S. citizens	46,332	31%	
Entered before 1980 (16% of total foreign born)			134,657
Naturalized U.S. citizens	115,033	85%	
Not U.S. citizens	19,624	15%	



The majority of the foreign born population in Virginia identify the location of their birth as Asia (41% of all foreign born). Currently, among those who entered Virginia in or after 2000, the highest percentage of foreign born individuals report their place of birth to be Latin America (63% of population entering 2000 and later). The majority of this group reports their place of birth as being Mexico (52%), with 95% not being U.S. citizens. The next highest percentage of foreign born individuals who report not being U.S. citizens are those born in Europe (83%), though this group only makes up 11% of the foreign born population in Virginia.



PERCENTAGE OF FOREIGN BORN POPULATION WHO SPEAK ONLY ENGLISH



24%

Approximately 17% of the foreign born population in Virginia report that they only speak English, while 33% speak Spanish, 24% speak Asian and Pacific Island languages, 19% speak other Indo-European languages, and 8% speak another language. Approximately 40% of Spanish speakers reported their ability to speak English as “not well” or “not at all.” Much lower percentages of speakers of Asian and Pacific Island languages (21%), Indo-European languages (10%), and other languages (10%) report speaking English “not well” or “not at all.”

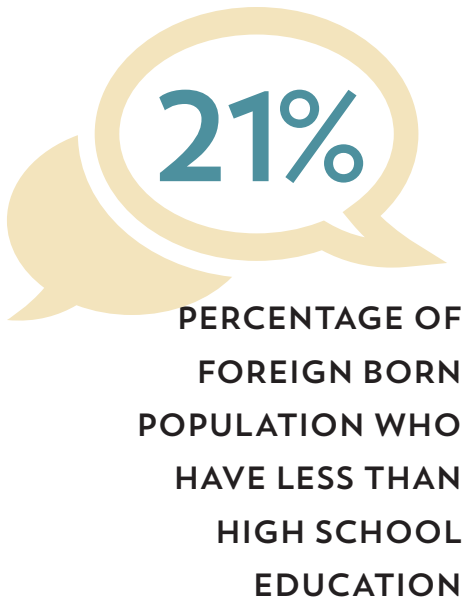
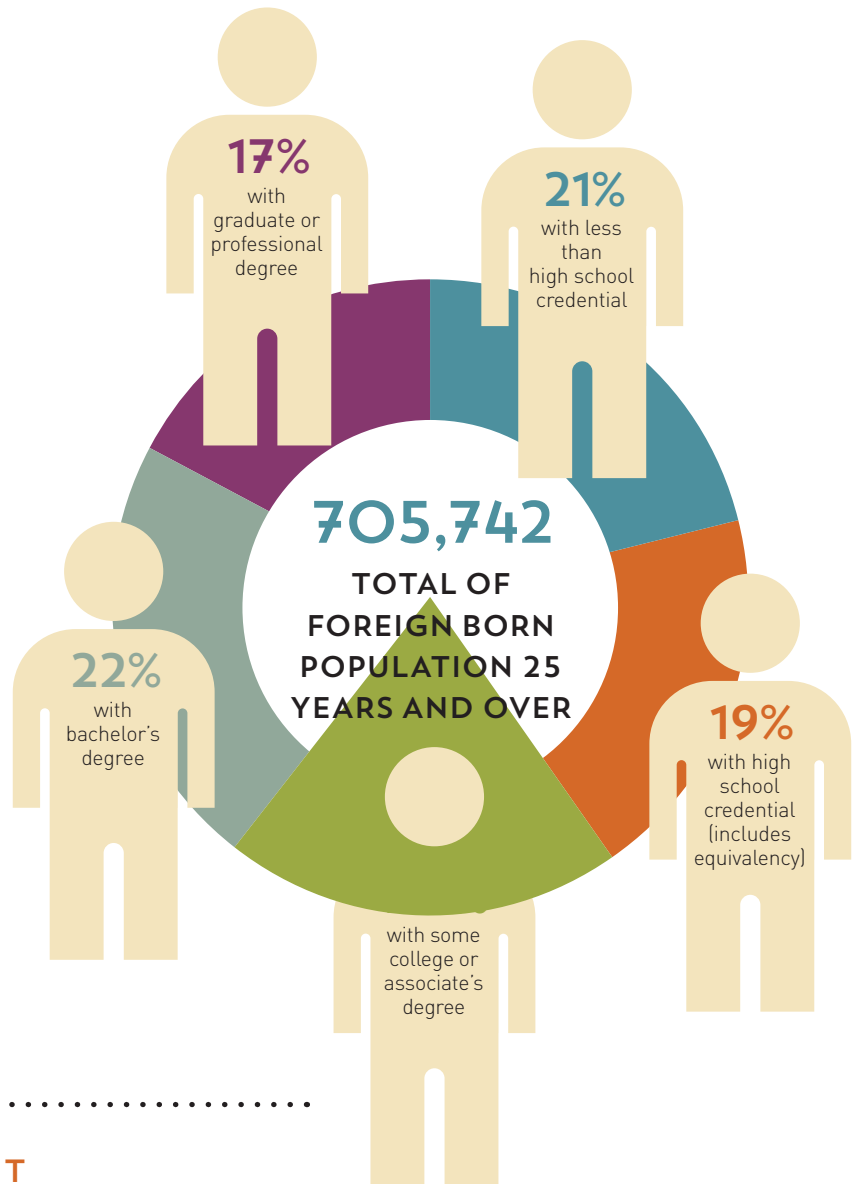
LANGUAGE SPOKEN AT HOME AND ENGLISH-SPEAKING ABILITY

Total Foreign Born Population 5 Years and Over			863,671
Speak Only English (17% of total foreign born)			143,726
Speak Spanish (33% of total foreign born)			281,644
Speak English “very well”	99,899	35%	
Speak English “well”	69,786	25%	
Speak English “not well”	78,494	28%	
Speak English “not at all”	33,465	12%	
Speak Other Indo-European Languages (19% of total foreign born)			165,255
Speak English “very well”	113,505	69%	
Speak English “well”	34,991	21%	
Speak English “not well”	13,450	8%	
Speak English “not at all”	3,309	2%	
Speak Asian and Pacific Island Languages (24% of total foreign born)			206,920
Speak English “very well”	103,237	50%	
Speak English “well”	59,925	29%	
Speak English “not well”	35,851	17%	
Speak English “not at all”	7,907	4%	
Speak Other Languages (8% of total foreign born)			66,126
Speak English “very well”	42,984	65%	
Speak English “well”	16,849	25%	
Speak English “not well”	5,062	8%	
Speak English “not at all”	1,231	2%	

PERCENTAGE OF FOREIGN BORN POPULATION WHO SPEAK ASIAN & PACIFIC ISLAND LANGUAGES

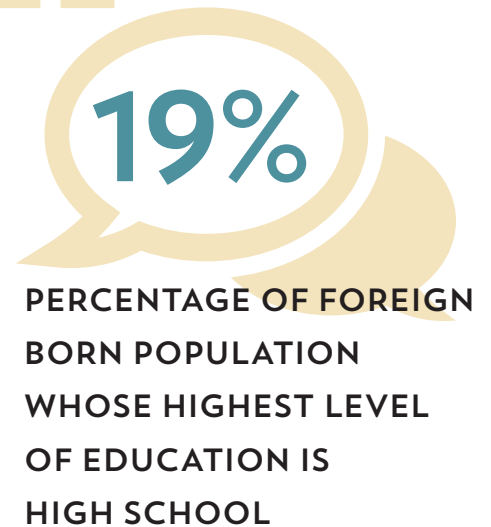
Educational attainment by Virginia's foreign born population is fairly well distributed across categories. When asked about their education level, the majority report having a bachelor's degree (22%). The next highest percentage reported having less than a high school degree (21%). The lowest percentage of the foreign born population reporting having a graduate degree or higher level degree (17%).

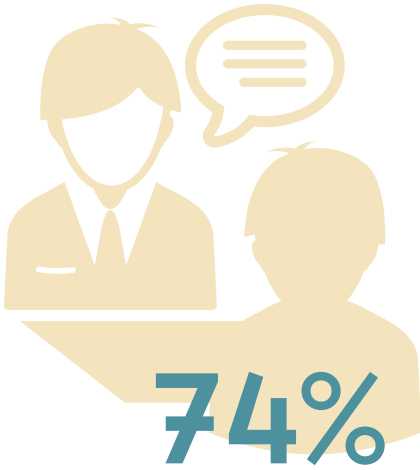
PERCENTAGE OF EDUCATIONAL ATTAINMENT OF FOREIGN BORN POPULATION



EDUCATIONAL ATTAINMENT

Foreign Born Population 25 Years and Over	705,742
Less than High School Graduate	148,608
% of 25+ foreign borns with less than HS	21%
High School Graduate (includes equivalency)	134,322
% of 25+ foreign borns with HS or equivalency	19%
Some College or Associate's Degree	143,800
% of 25+ foreign borns with some college or associate's degree	20%
Bachelor's Degree	155,860
% of 25+ foreign borns with bachelor's degree	22%
Graduate or Professional Degree	123,152
% of 25+ foreign borns with graduate or professional degree	17%





74%
**PERCENTAGE OF
 FOREIGN BORN
 POPULATION AGED
 16 OR OLDER IN
 THE WORKFORCE**

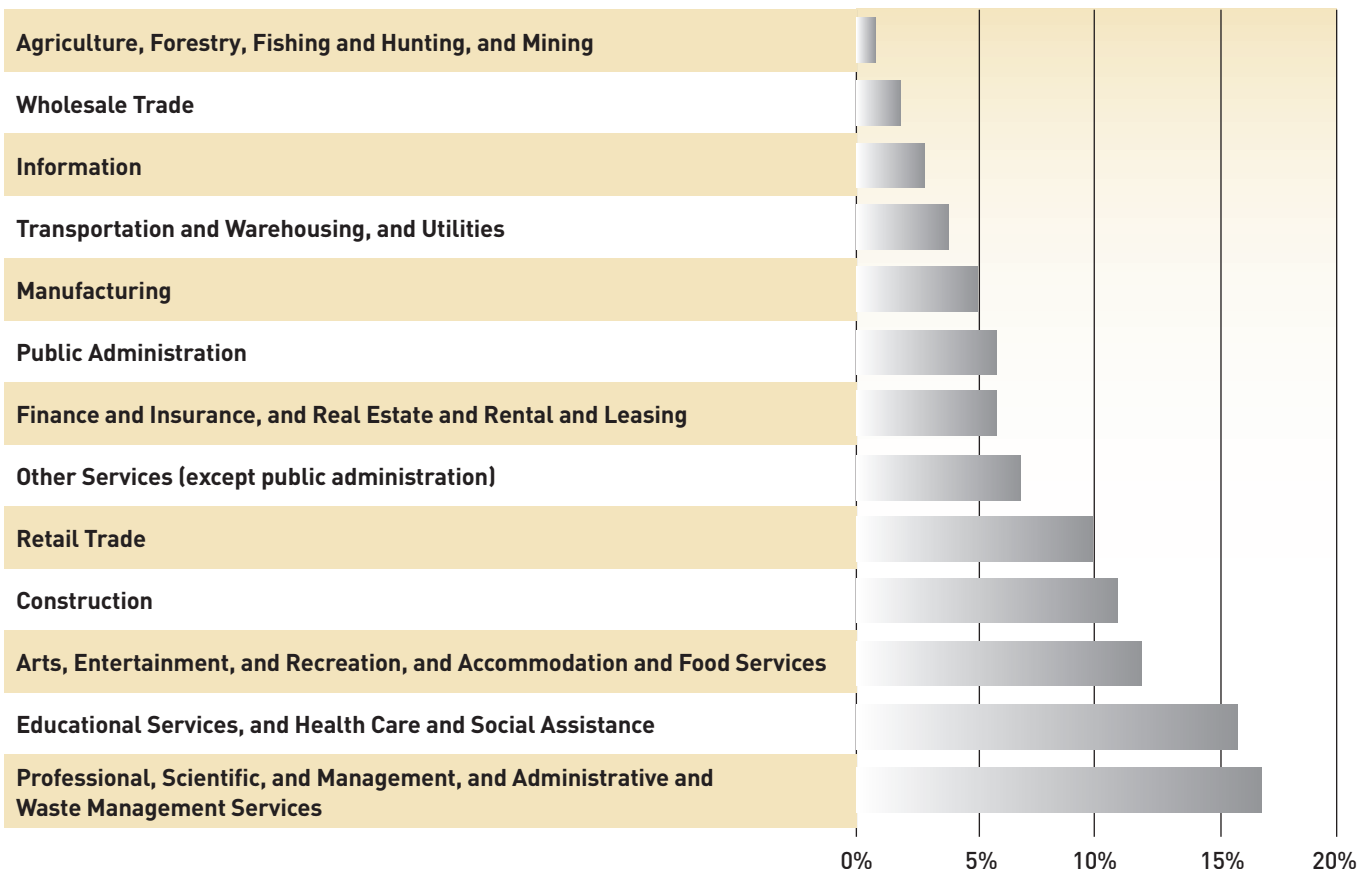
Of the foreign born population who are aged 16 or older, approximately 74% are in the workforce and 26% are not looking for work or have never worked. In the labor force, the majority of the foreign born population hold civilian jobs (99%), while one percent hold military jobs. Approximately 6% of the foreign born population in the civilian workforce are currently unemployed.

The highest percentage of foreign born reported holding management, business, science, and art occupations (37%), followed by service occupations (22%) and sales/office occupations (19%).

When looking at the data by industry type, the highest categories were “professional, scientific, and management, administrative and waste management services” (17%, or 95,727 individuals) and “educational services, and health care and social assistance” (16%). Less than five percent of foreign born reported holding jobs in the agriculture, forestry, fishing, hunting, and mining industry (1%); wholesale trade industry (2%); transportation, warehousing, and utilities industry (4%); and the construction industry (3%).



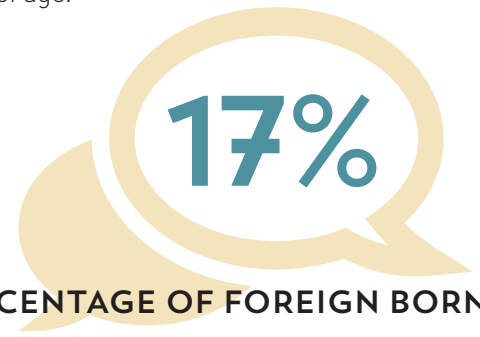
PERCENTAGE OF FOREIGN BORN POPULATION IN WORKFORCE BY INDUSTRY TYPE



LABOR FORCE PARTICIPATION

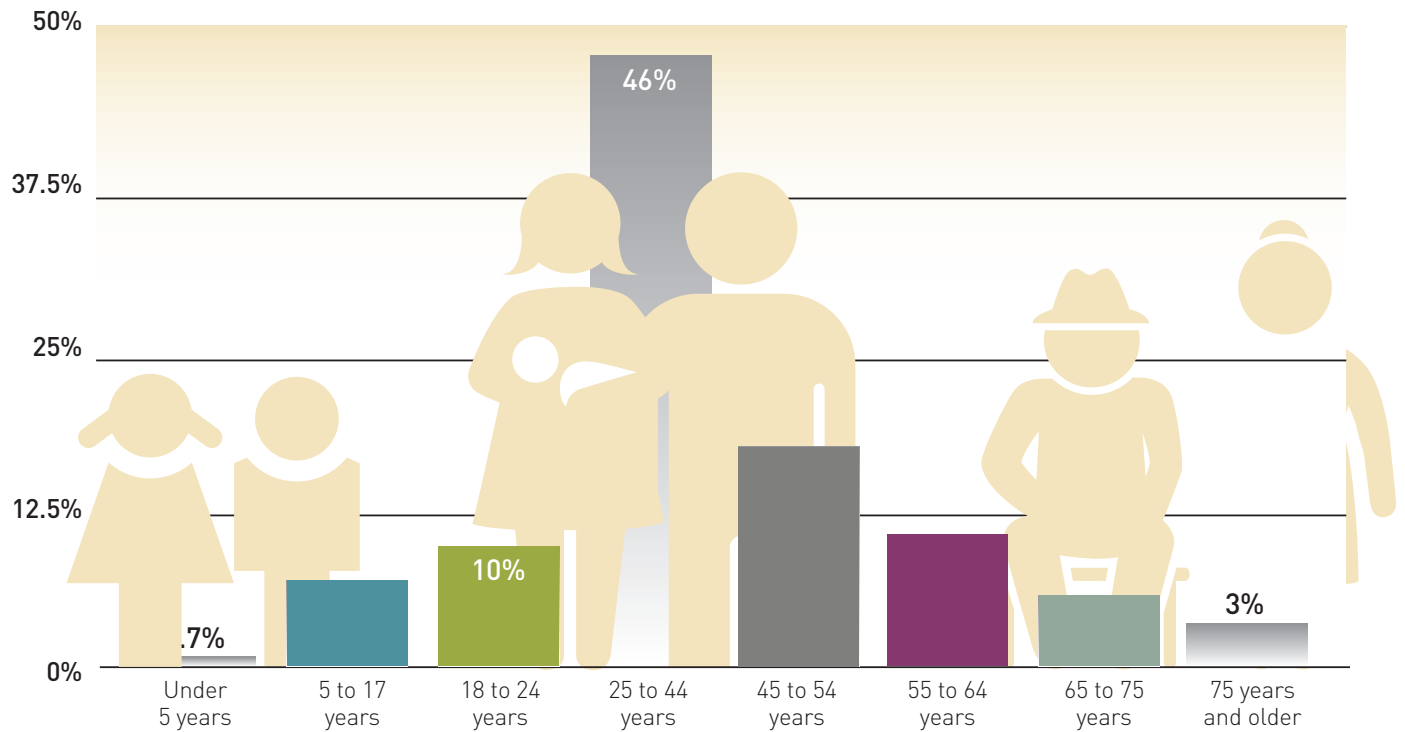
Foreign Born Population 16 Years and Over	816,528
In Labor Force (both civilian and military)	605,047
% of 16+ foreign borns in labor force	74%
Civilian Labor Force (non-military)	598,515
% of civilians in foreign born labor force	99%
Employed	563,404
% of civilian labor force employed	94%
Unemployed	35,111
% of civilian labor force unemployed	6%
Armed Forces	6,532
% of military personnel in foreign born labor force	1%
Not in Labor Force	211,481
% of 16+ foreign born not in labor force	26%

Of the total foreign born population in Virginia, the highest percentage report being between the ages of 22 and 44 (46%), with the next highest percentage reporting being between 45 and 54 years of age (17%). The lowest percentage of the foreign born population, less than one percent, reported being younger than five years of age. Approximately 7% of the foreign born population is school age (i.e., elementary, middle, or high school), though this percentage only includes individuals who are 5 to 17 years of age.



PERCENTAGE OF FOREIGN BORN POPULATION WHO REPORTED BEING BETWEEN 45 AND 54 YEARS OF AGE

DISTRIBUTION BY AGE OF VIRGINIA'S TOTAL FOREIGN BORN POPULATION

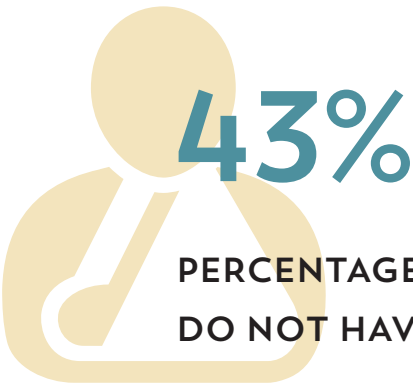
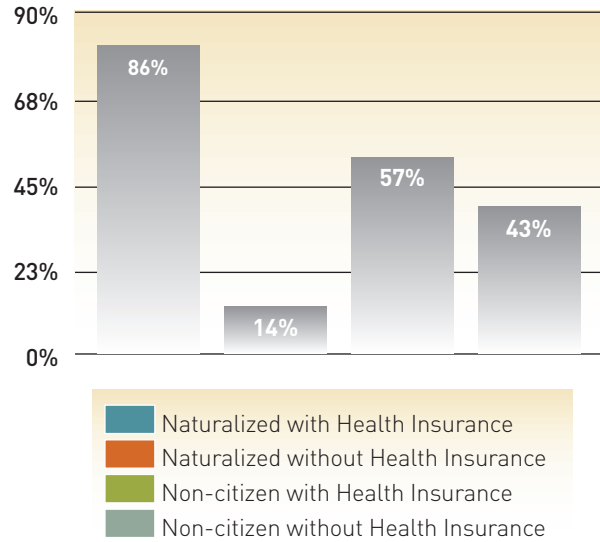


Of the total foreign born population in Virginia, the majority report that they are “now married” (62%; data includes individuals who are 15 years of age and older).

Approximately 60% of housing units reported by the foreign born population are owner-occupied units versus renter-occupied.

Of the total foreign born population in Virginia, a higher percentage of those who are naturalized (86%) have health insurance than those who are not U.S. citizens (57%).

HEALTH INSURANCE OF FOREIGN BORN POPULATION



PERCENTAGE OF FOREIGN BORN NON-CITIZENS WHO DO NOT HAVE HEALTH INSURANCE

REGIONAL TRENDS

To discern trends and help identify the areas of greatest need for adult education and civics programs, educational attainment, naturalization, and origin of Virginia foreign born were compared across regions.

Regions were grouped based on the level of education of foreign born residents for the initial analysis; all levels above high school equivalency were grouped together for this analysis. Data on naturalization rates for each region were added and, finally, nativity (origin) of foreign born was presented. The table at right shows the twelve regions that fell into the grouping where the education level was primarily above high school equivalency. The highest percentages for each variable are **bolded** to help illuminate any patterns in the data.

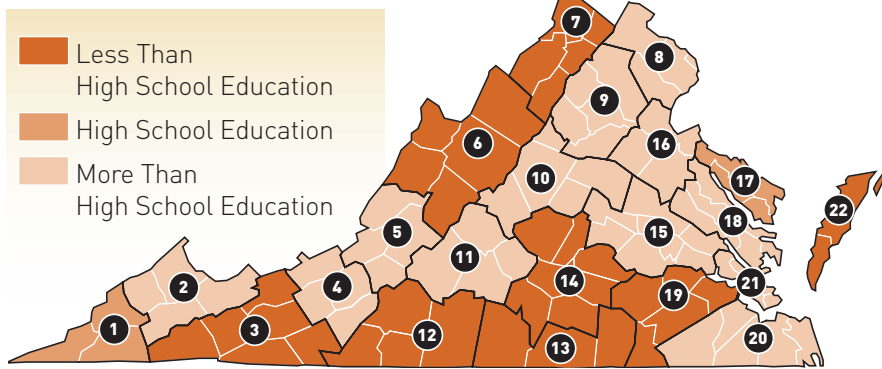
Generally, high education is related to those whose origin is “Asia,” although this is not always true. Region 10 has a higher educational attainment of 64% and the foreign born



population is relatively evenly distributed (Asia=36%; Latin America=26%; Europe/Other=38%).

The highest percentages of naturalization correspond to a higher “Asia” origin twice, “Europe/Other” once, and in Region 21, with a naturalization rate of 51%, there is an even dispersion of the foreign born population across the region (Asia=37%; Latin America=32%; and Europe/Other=31%) This indicates that each region may have unique factors that influence both educational attainment and naturalization that are not necessarily related to origin.

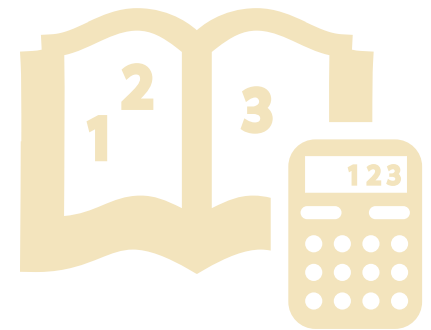
LEVELS OF EDUCATION OF FOREIGN BORN POPULATION



Patterns are also identifiable in the data focusing on those with less than a high school education. In these eight regions, low educational attainment and low rates of naturalization correspond to a higher Latin America origin. For example, in Region 7, 44% of the foreign born population do not have a high school equivalent education, 31% of the foreign born are naturalized (i.e., 70% are not U.S. citizens), and 64% are of Latin American origin.

HIGHER LEVELS OF EDUCATION AND NATURALIZATION BY DISTRICT

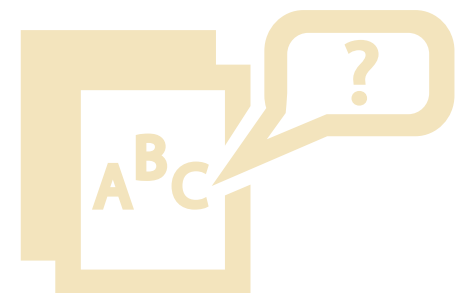
Planning District	% More Than High School	% Naturalized	Distribution of Foreign Born Within District		
			Asia	Latin America	Europe/Other
2	68%	62%	51%	14%	35%
4	80%	32%	51%	16%	33%
5	55%	38%	31%	38%	31%
8	62%	46%	44%	37%	20%
9	51%	40%	17%	52%	32%
10	64%	37%	36%	26%	38%
11	59%	37%	41%	22%	37%
15	54%	39%	37%	38%	26%
16	53%	50%	27%	47%	26%
18	57%	54%	14%	35%	51%
20	64%	56%	47%	28%	26%
21	59%	51%	37%	32%	31%



IN EIGHT REGIONS, LOW EDUCATIONAL ATTAINMENT AND LOW RATES OF NATURALIZATION CORRESPOND TO A HIGHER LATIN AMERICA ORIGIN.

LOWEST LEVELS OF EDUCATION AND NATURALIZATION BY DISTRICT

Planning District	% Less Than High School	% Naturalized	Distribution of Foreign Born Within District		
			Asia	Latin America	Europe/Other
3	30%	28%	15%	58%	27%
6	39%	32%	21%	52%	27%
7	44%	31%	17%	64%	19%
12	37%	28%	17%	62%	21%
13	36%	46%	28%	45%	27%
14	33%	41%	17%	55%	28%
19	41%	40%	21%	51%	29%
22	30%	22%	8%	78%	14%



Regions 1 and 17 were not included in the regional comparison tables. No educational attainment data reported was reported for Region 17. Region 1 fell into the "high school or GED" educational level and reported a naturalization rate of 46%, which is a somewhat higher rate comparatively. Distribution of origin for Region 1 was Asia=30%; Latin America=52%; and Europe/Other=18%.

The maps included in the section help to visualize how the foreign born population is distributed across the Commonwealth. High Asian populations are often found in regions where higher education institutions are located. Northern Virginia shows a very diverse distribution, and more rural areas tend to lower education levels and more concentrated Latin American origins of the foreign born.

In sum, the analysis of the foreign born in Virginia demonstrates that regional factors play a significant role in the characteristics of the foreign born population.

.....

IN SUM, THE ANALYSIS OF THE FOREIGN BORN IN VIRGINIA DEMONSTRATES THAT REGIONAL FACTORS PLAY A SIGNIFICANT ROLE IN THE CHARACTERISTICS OF THE FOREIGN BORN POPULATION.

.....



Most percentages have been rounded to the nearest whole number throughout this report. Percentages less than 1% have been rounded to the nearest tenth. Due to rounding, some percentage totals may not equal 100%.

• **Regional Report Published By:**
• **VIRGINIA ADULT LEARNING RESOURCE CENTER**
• The Literacy Institute at Virginia Commonwealth University
• 3600 W. Broad St, Ste 112 • Richmond, VA 23230
• www.valrc.org • 800 237-0178